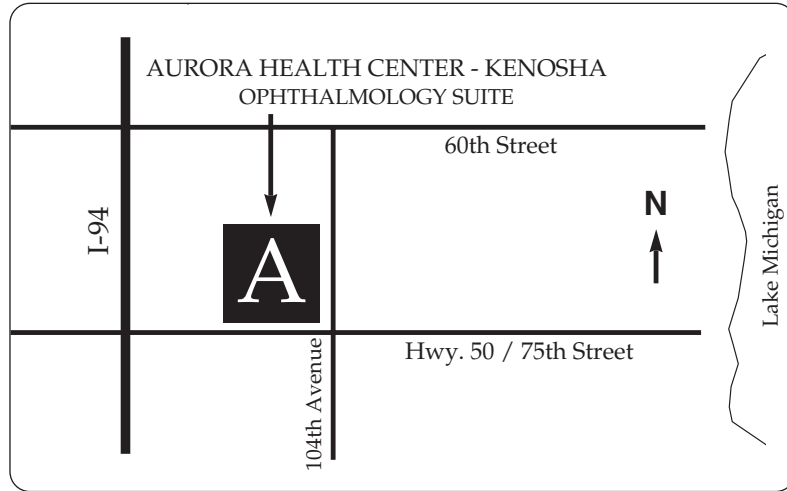


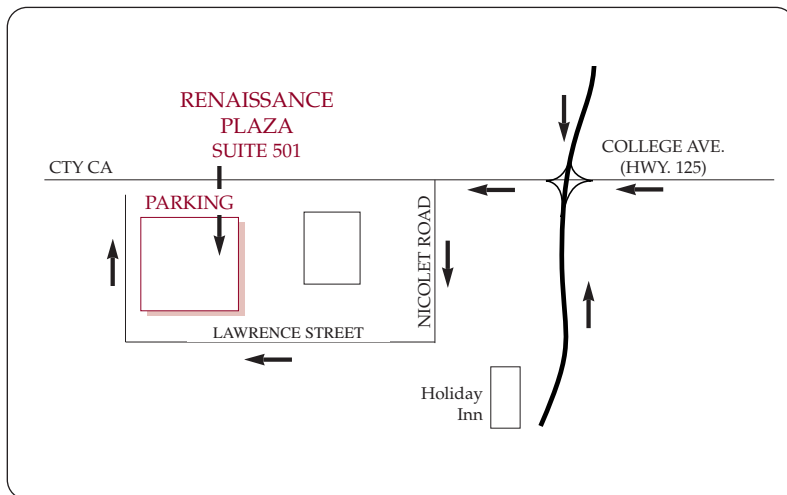
## KENOSHA OFFICE Aurora Health Center



### Directions To Kenosha Office

From the NORTH or SOUTH approach on Hwy. I-94. Exit at Hwy. 50. Proceed East on Hwy. 50 / 75th Street to the NW corner of Hwy. 50 / 75th Street and 104th Avenue. (Aurora Health Center-Kenosha). **10400-75TH STREET, OPHTHALMOLOGY SUITE • 262-948-6610**

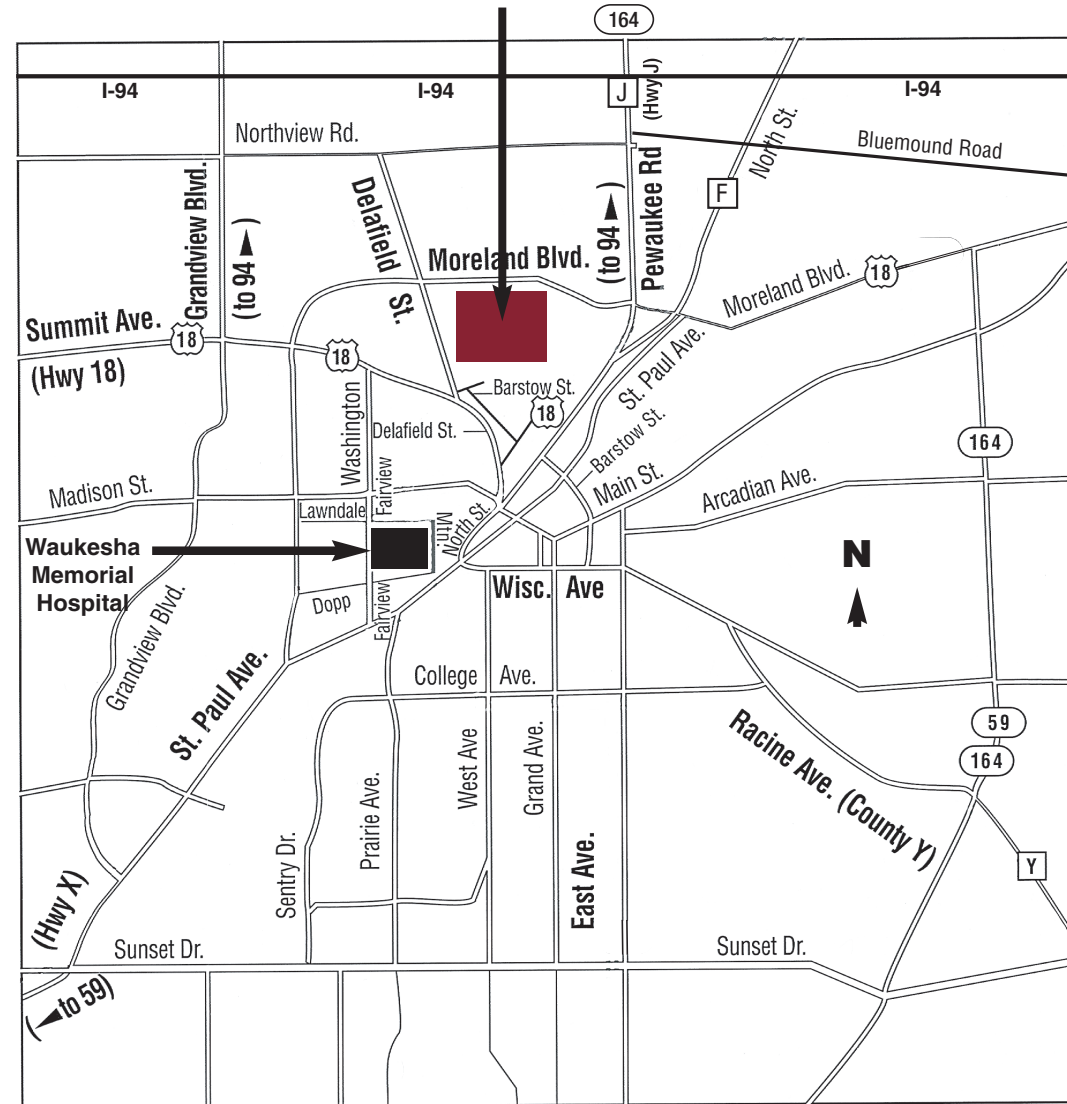
## APPLETON OFFICE Renaissance Plaza



### Directions To Appleton Office

From the NORTH or SOUTH approach on Hwy. 41. Exit at College Avenue, West. Proceed West on College Avenue to Nicolet Road. Go South on Nicolet Road, turn Right on Lawrence Street. Proceed to 2nd Bronze building (Renaissance Plaza). **4351 WEST COLLEGE AVENUE, SUITE 220 • 920-832-4545**

## WAUKESHA OFFICE Moreland Medical Center



### Directions To Waukesha Office

From NORTH: Proceed to I-94. Take the Hwy 164/J exit (exit 294) and proceed SOUTH to Moreland Blvd. Go WEST on Moreland Blvd. to Delafield Street. Turn SOUTH on Delafield and proceed to the Center, it is on the EAST side of the street.

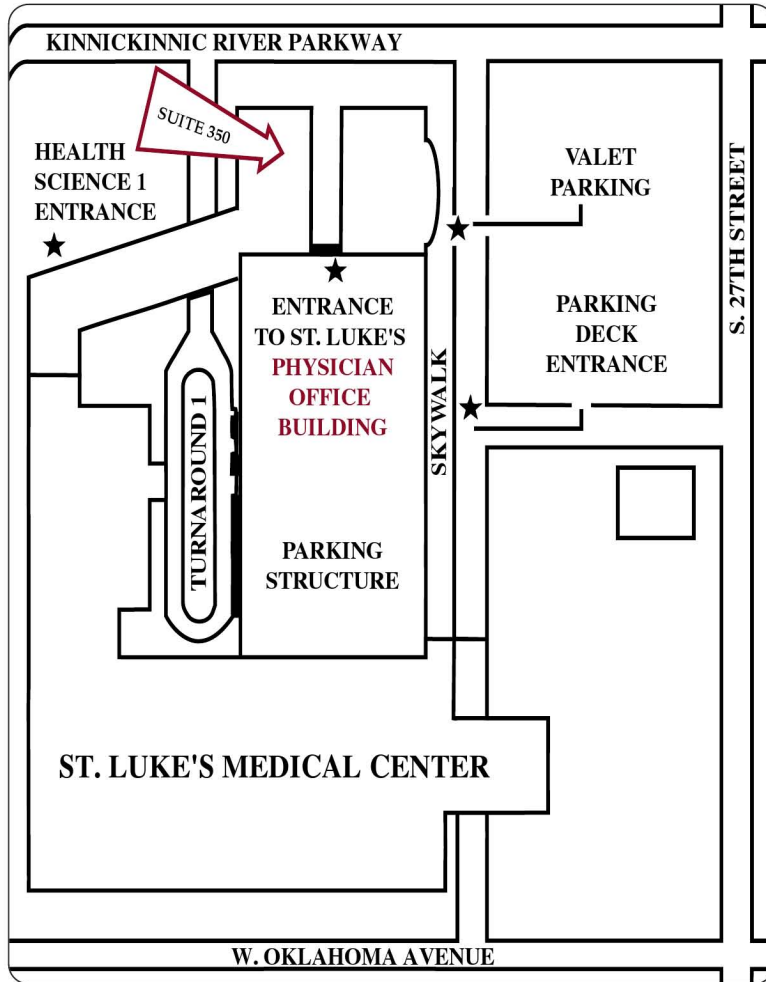
From WEST (Madison): Take I-94 east to the Hwy 164/J exit (exit 294) and use the same directions above to the Center.

From EAST (Milwaukee): Take I-94 west to the Hwy 164/J exit (exit 294) and use the same directions above to the Center.

From SOUTH: Proceed to I-43. Exit 164 North to to the Intersection of 164 and 59. If you **turn left**, continue on 59 to Hwy. X(St. Paul Avenue). Turn Right and continue on St. Paul to Moreland Blvd. Turn left onto Moreland Blvd. and continue to Delafield Street. Turn SOUTH on Delafield and proceed to the Center, it is on the EAST side of the street. If you **turn right**, continue on 164 N to Hwy 18. Turn Left onto Hwy 18 and continue west, Hwy 18 becomes Moreland Blvd. if you continue West at the intersection of Hwy 18 & 164 N. Continue on Moreland Blvd. to Delafield Street. Turn SOUTH on Delafield and proceed to the Center, it is on the EAST side of the street. **1111 DELAFIELD STREET, SUITE 227 • 262-524-9323**

## ST. LUKE'S OFFICE

### St. Luke's Physician Office Bldg.



*Directions To St. Luke's Office*

From NORTH (Green Bay): Take I-43 south to I-94 east (towards Chicago). Exit on Holt Avenue going west. (Holt becomes Morgan Avenue). Turn right on 27th Street and proceed north to Oklahoma Avenue.

From WEST (Madison): Take I-94 east to 894 east. Continue to the 27th St. exit north and proceed north to Oklahoma Avenue.

From SOUTH (Chicago): Take I-94 west to 894 west. *Immediately* get into the right lane and exit on 27th Street north. Proceed north on 27th Street to Oklahoma Avenue.

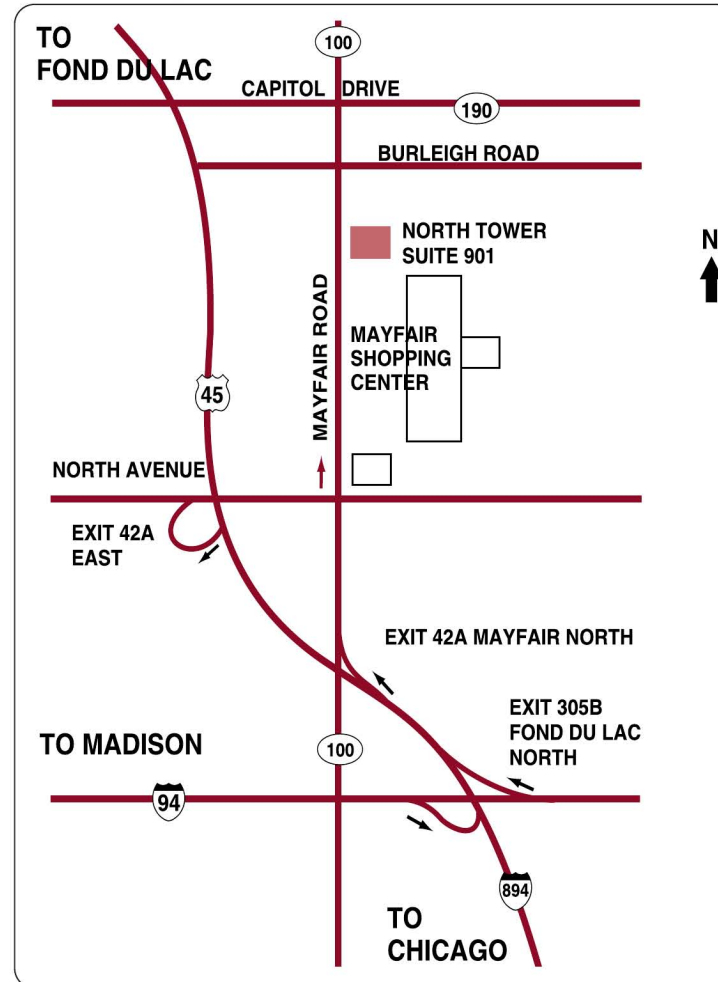
2801 W. KINNICKINNIC RIVER PKWY., SUITE 350 • 414-649-4660

Free valet parking is available at the St. Luke's Physician Office Building from 8:00 a.m. to 5:30 p.m..

Parking is also located directly adjacent to the building in the structure accessed from South 27th Street.

## MAYFAIR OFFICE

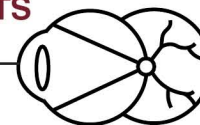
### Mayfair Mall - North Tower



*Directions To Mayfair Mall- North Tower Office*

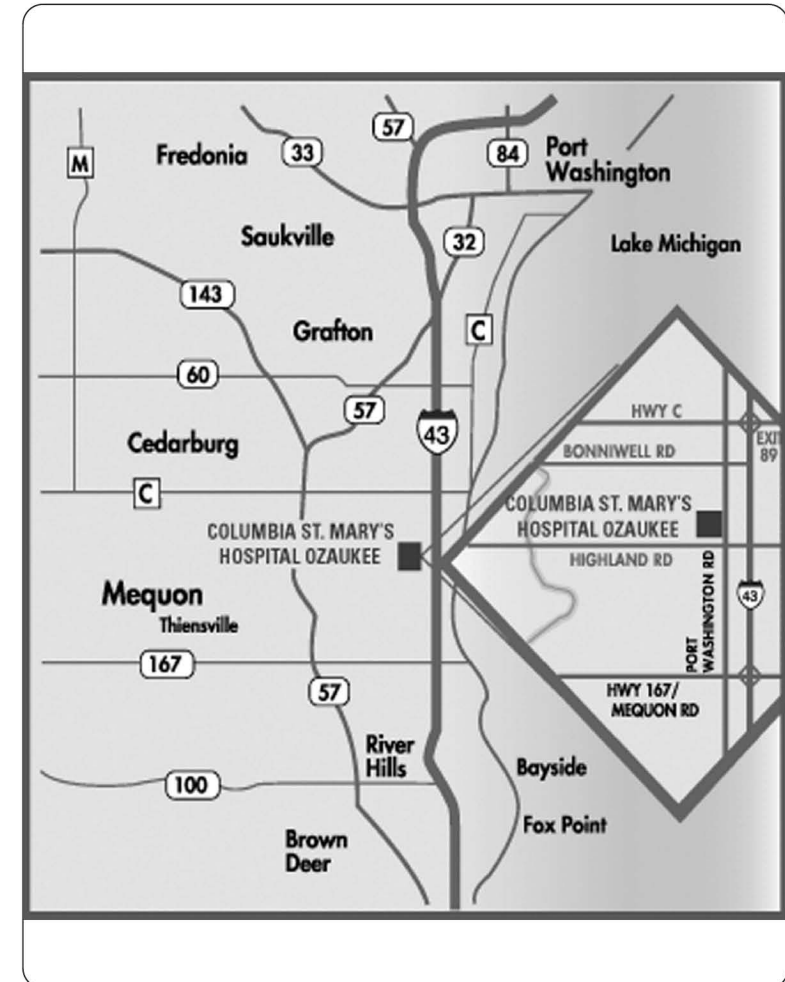
From the north or south, approach on Hwy. 45. **From the South**, exit at 42A Mayfair Road, North. Proceed north on Mayfair Road to North Tower Entrance. **From the North**, use the "North Avenue East" exit. Proceed east on North Ave. to stoplight - turn left(North) onto Mayfair Road. Proceed several blocks to the North Tower. THE NORTH TOWER IS ON THE NORTH-WEST CORNER OF MAYFAIR SHOPPING CENTER.  
2600 N. MAYFAIR ROAD, SUITE 901 • 414-774-3484

## RETINA & VITREOUS CONSULTANTS OF WISCONSIN LTD.



## MEQUON OFFICE

### Seton Professional Bldg. – Ozaukee



*Directions To Seton Mequon Office*

From the NORTH, take I-43 South to the Hwy C exit. Continue WEST on Hwy C (Cedarburg exit) to Port Washington Road (Hwy W). Proceed SOUTH on Port Washington Road 1.6 miles to the Hospital.

From the SOUTH, take I-43 North to Mequon Road (Hwy 167 exit). Proceed WEST on Mequon Road to Port Washington Road (Hwy W). Proceed NORTH on Port Washington Road 2.4 miles to the Hospital.

13133 N. PORT WASHINGTON, SUITE 120 • 262-240-0457  
(Next to St. Mary's Ozaukee Hospital)